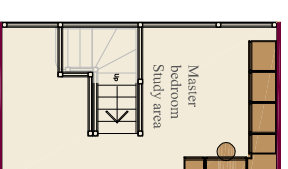
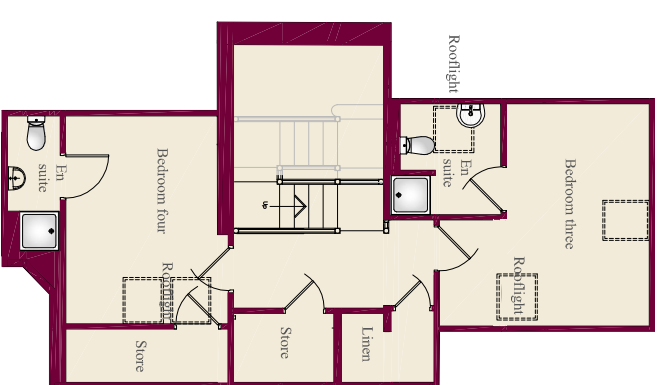
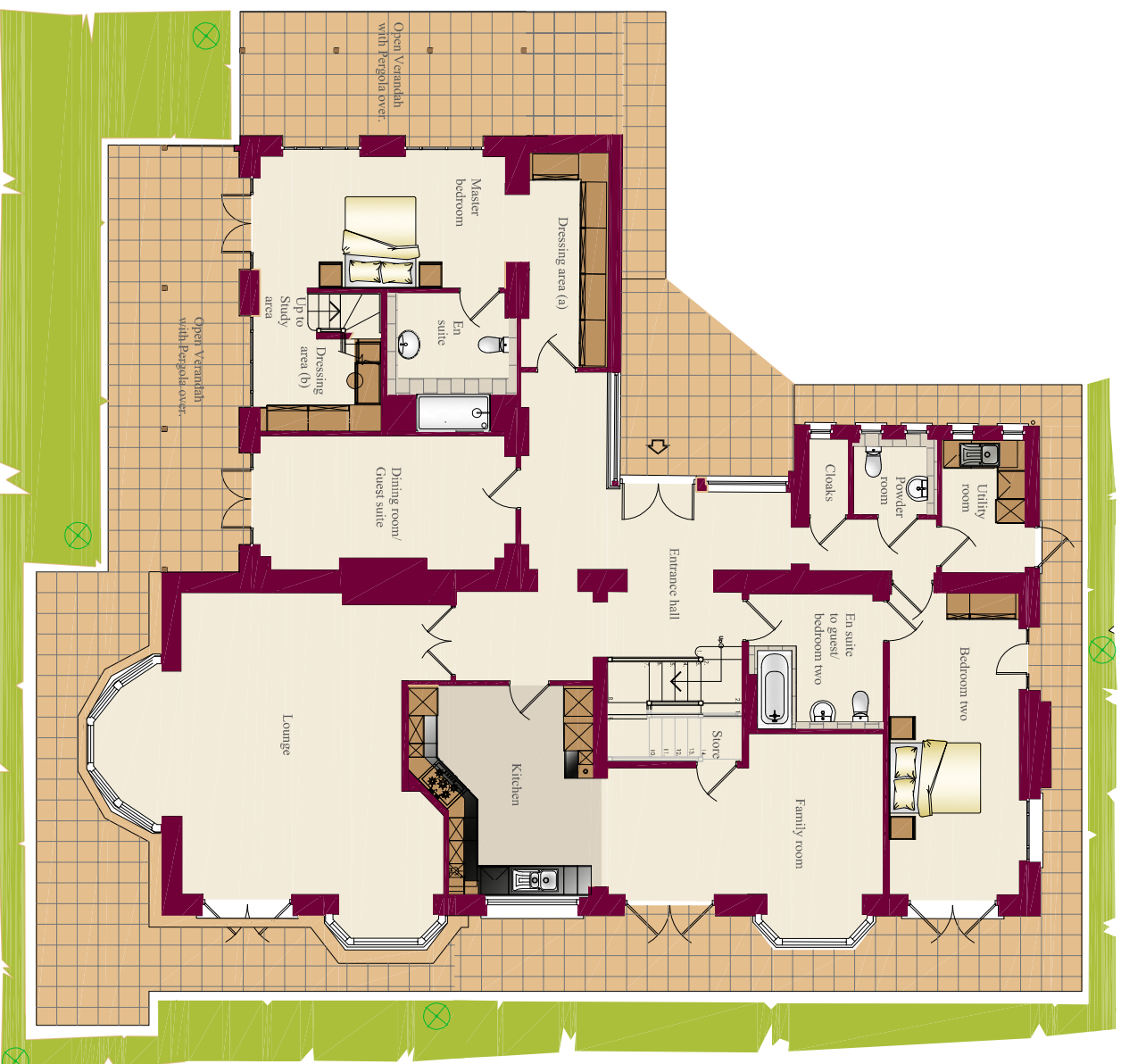


Maple House



- Lounge / Dining
6110 x 44750 (min)
(20' 1" x 15' 7")
- Kitchen
4500 x 3975
(14' 9" x 13' 0")
- Family room
3450 (min) x 5935
(11' 4" x 19' 6")
- Master bedroom
5285 x 2815
(17' 4" x 9' 3")
- Dressing area (a)
4615 x 1630
(15' 2" x 5' 4")
- Dressing area (b)
1950 x 2625
(6' 5" x 8' 7")
- Study area
2960 x 2550
(9' 9" x 8' 4")



- En suite
2960 x 2740
(9' 0" x 9' 0")
- Dining room
5270 x 2600
(17' 3" x 8' 6")
- Bedroom 2
6500 x 2765
(21' 4" x 9' 1")
- Bed 2 En suite
2675 x 2840
(8' 9" x 9' 4")
- Powder room
1580 x 1765
(5' 2" x 5' 9")
- Utility room
2835 x 1775
(9' 4" x 5' 10")
- Bedroom 3
4265 x 2825
(14' 0" x 9' 3")
- Bed 3 En suite
2105 x 1800
(6' 11" x 5' 11")
- Bedroom 4
4025 x 2960
(13' 2" x 9' 9")
- Bed 4 En suite
2730 x 1100
(8' 11" x 3' 7")

**Large double garage with upper level & large landscaped areas also included with this property - pls ask sales staff for further information.*

Drawing Issued: 18.06.09

Please Note: The details and sizes indicated are for guidance only and may vary during construction. All furniture shown for guidance only. PJ Livesey Group Ltd reserve the right to alter or amend plans accordingly.

PJ Livesey Group | Ashburton Park | Beacon Road | off Ashburton Road West | Manchester M17 1AF T: 0161 873 7878 | F: 0161 873 7141 | E:sales@pjlivesey.co.uk | W:www.pjlivesey-group.co.uk

