

Mezes 3 - Lime House

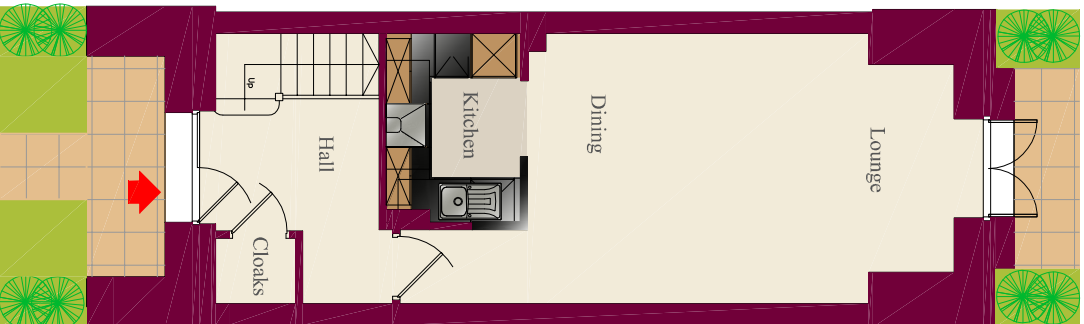
Kingsley
Park

d e l a m e r e

GROUND FLOOR

Lounge / Dining
5825 (min) x 3680
(19' 1" x 12' 1")

Kitchen
2550 x 1800
(8' 4" x 5' 11")

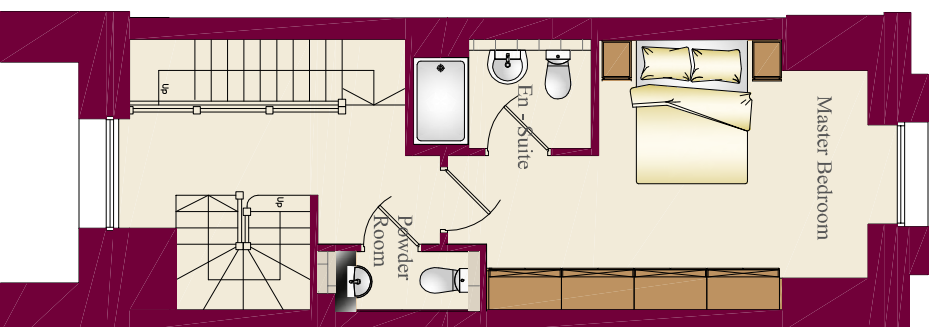


1st FLOOR

Master Bedroom
5200 x 3680
(17' 1" x 12' 1")

En Suite
2380 x 1450
(7' 10" x 4' 9")

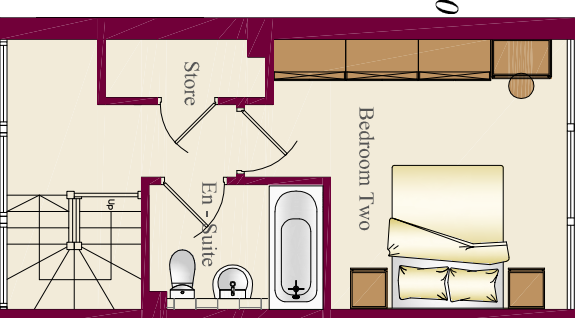
Powder Room
860 x 2175
(2' 10" x 7' 2")



2nd FLOOR

Bedroom Two
4000 (max) x 3680
(13' 3" x 12' 1")

En Suite
2350 x 1670
(7' 9" x 5' 6")



Drawing Issued: 10.06.09

Please Note: The details and sizes indicated are for guidance only and may vary during construction. All furniture shown for guidance only.
PJ Livesey Group Ltd reserve the right to alter or amend plans accordingly.

PJ Livesey Group | Ashburton Park | Beacon Road | off Ashburton Road West | Manchester M17 1AF T: 0161 873 7878 | F: 0161 873 7141 | E:sales@pjlivesey.co.uk | W:www.pjlivesey-group.co.uk

PJ Livesey
GROUP