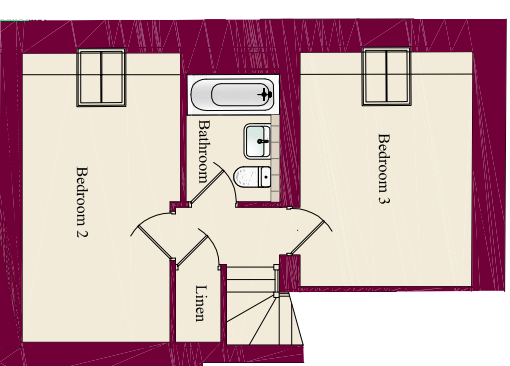




Ground Floor



First Floor

Lounge/Dining 5270 x 4660(max) (17' 3" x 15' 3")	Sun Lounge 3050 x 2985 (10' 0" x 9' 10")	Master Bedroom 3950 x 3790 (13' 0" x 12' 5")	Bedroom 2 2860 x 4440 (9' 5" x 14' 7") <i>*Ceiling pitches</i>	Bedroom 3 3840 x 3125 (12' 7" x 7' 6") <i>*Ceiling pitches</i>
Kitchen 2880 x 3115 (9' 5" x 10' 3")	Powder Room 1300 x 2830 (4' 3" x 9' 3")	En suite 1670 x 2830 (5' 6" x 9' 3")	Bathroom 2280 x 1670 (9' 5" x 7' 6") <i>*Ceiling pitches</i>	

HOUSE 2 - MARLBOROUGH COURT